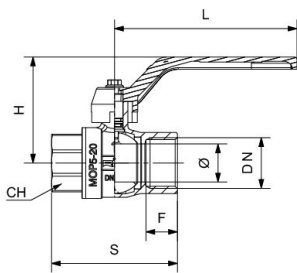




## RIV 4190

Ball valve F/F  
 full bore  
 aluminium lever handle

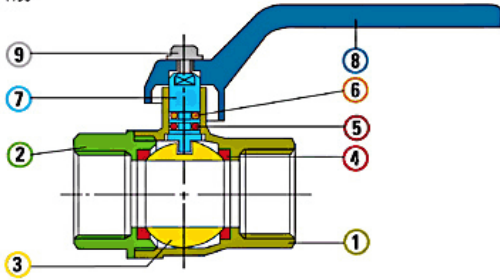
### Tech drawings and tables



DN	Code	Ø	H	S	L	F	PN	KG	P/box
1/4"	024190000002	10	48	45	80	12,5	64	0,118	30
3/8"	024190000003	10	48	45	80	12,5	64	0,121	30
1/2"	024190000004	15	55	59	105	17	64	0,217	10
3/4"	024190000005	20	66	69	120	18	40	0,354	10
1"	024190000007	25	70	83	120	22	40	0,552	10
1"1/4	024190000008	32	83	94	135	24	40	0,855	6
1"1/2	024190000009	40	93	102	160	24	40	1,131	4
2"	024190000011	50	102	124	160	28	40	1,751	4
2"1/2	024190000013	65	143	148	265	30	40	3,460	1
3"	024190000014	80	153	171	265	33	32	5,119	1
4"	024190000016	100	172	206	265	40	25	8,060	1

## Technical data

Art. 4190



### Materials

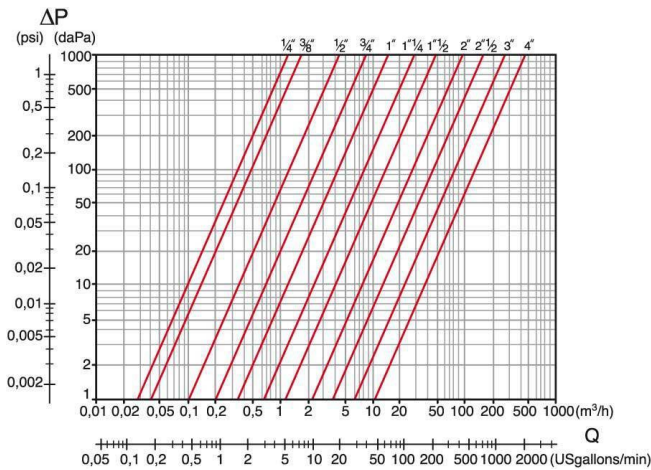
1	Body	Brass	CW617N	Nickel-plated
2	Body end	Brass	CW617N	Nickel-plated
3	Ball	Brass	CW617N	Chrome-plated
4	Seats	P.T.F.E.		
5	O-Ring	FKM		
6	O-Ring	NBR		
7	Stem	Brass	CW614N	
8	Lever	Aluminium		Green
9	Screw	Steel		Zinc-plated

**Connections** F/F: ISO 7/1Rp (parallel), ISO 7/1Rc (tapered), ANSI B1.20.1 (NPT) - M/F: male ISO 7/1R (tapered), female ISO 7/1Rp (parallel) - M/M: ISO 7/1R (tapered)

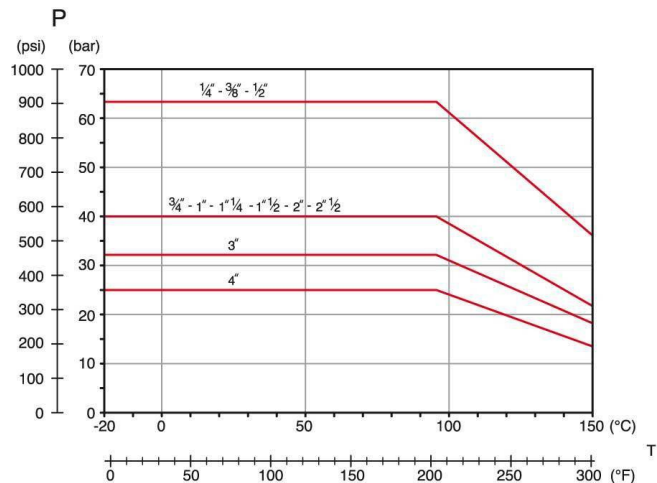
**Limit** -20°C (without liquid) +150°C

**Notes** The max.working pressure (PN) means at a room temperature of about 23°C.

## Pressure Loss Chart



## Temperature/Pressure



## Kv & Cv Coefficients

Size	Kv	Cv
1/4"	4,1	4,7
3/8"	6,3	7,3
1/2"	15,5	17,9
3/4"	31,0	36,0
1"	52,0	60,0
1 1/4"	100,0	116,0
1 1/2"	180,0	206,0
2"	350,0	405,0
2 1/2"	350,0	671,0
3"	1000,0	1157,0
4"	1550,0	1793,0